

Ovarian cyst

Disclaimer:
Read the disclaimer at medimaps.co.uk/disclaimer

References:
1. Gynaecology consultant Walsall NHS, March 2016
2. Common Gynaecological Conditions Leading to Referral, Redditch NHS, Oct 2018.

Benign reassuring

Unilocular cysts.
Diameter <10cm.
Minimal solid component <7mm.
Smooth outline.
Acoustic shadowing indicating Dermoid.
No blood flow.
No / Little fluid.

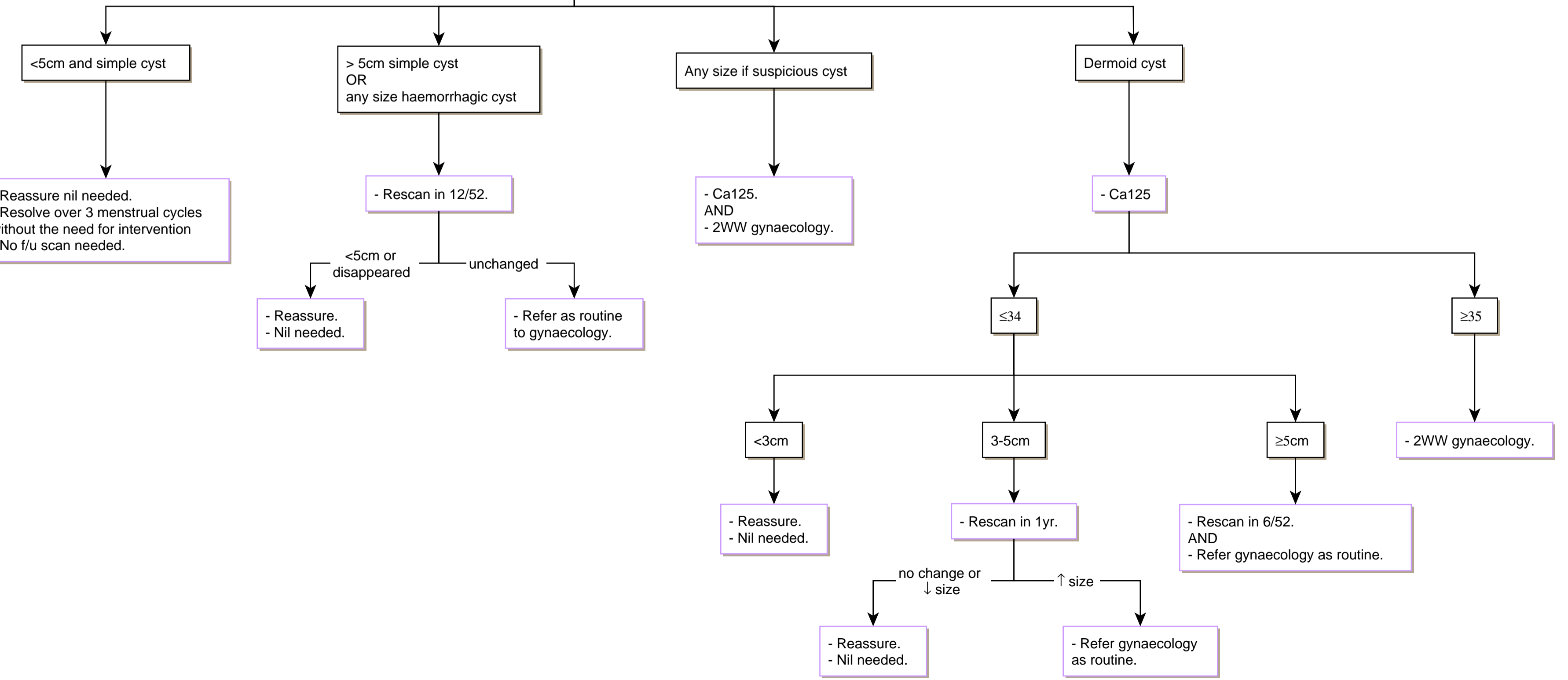
Suspicious for Ca

Multilocular cysts.
Diameter >10.
Solid component >7mm.
Irregular outline.
Features not indicative of Dermoid.
Prominent blood flow.
Ascites or significant fluid.

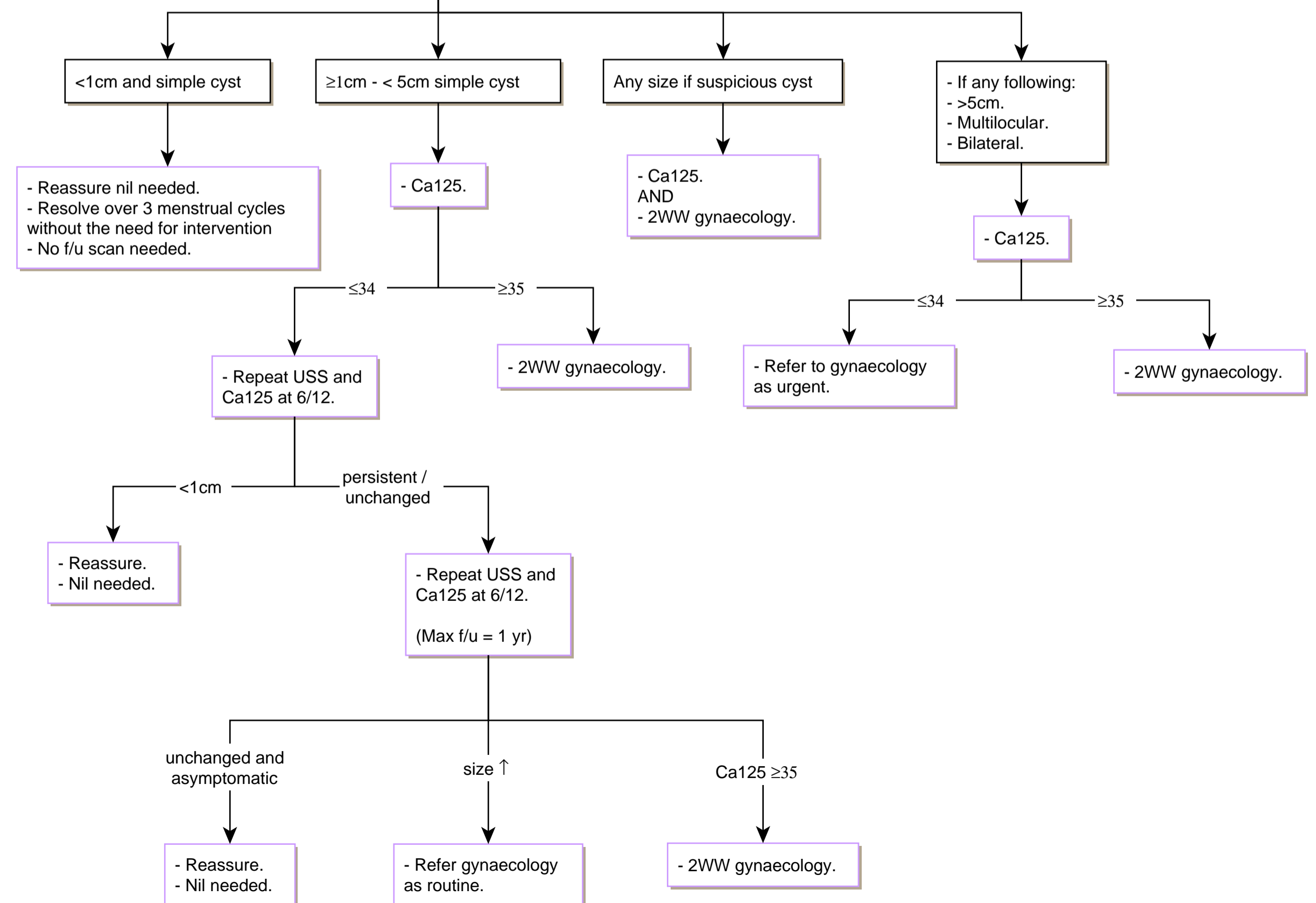
Gynaecology consultant and hospital guideline author:
"Having multiple locules does NOT indicate malignancy and need 2ww, but multilocularity is one of a whole host of possible suspicious features."
- There are many factors to consider when deciding on urgency of referral, and one suspicious feature does not equal 2ww.

- Analysis showed a raised rate of ovarian cancer for women who had spent ten years or more as accountants, hairdressers, barbers or beauticians.
- Rates were also higher for those exposed over time to cosmetic talc, ammonia, hydrogen peroxide, certain fibres, organic dyes and pigments.
Ref: Leung, L. et al. Occupational environment and ovarian cancer risk. Occupational & Environmental Medicine 11 July 2023
doi: 10.1136/oemed-2022-108557

Premenopausal



Post menopausal



Pregnant

