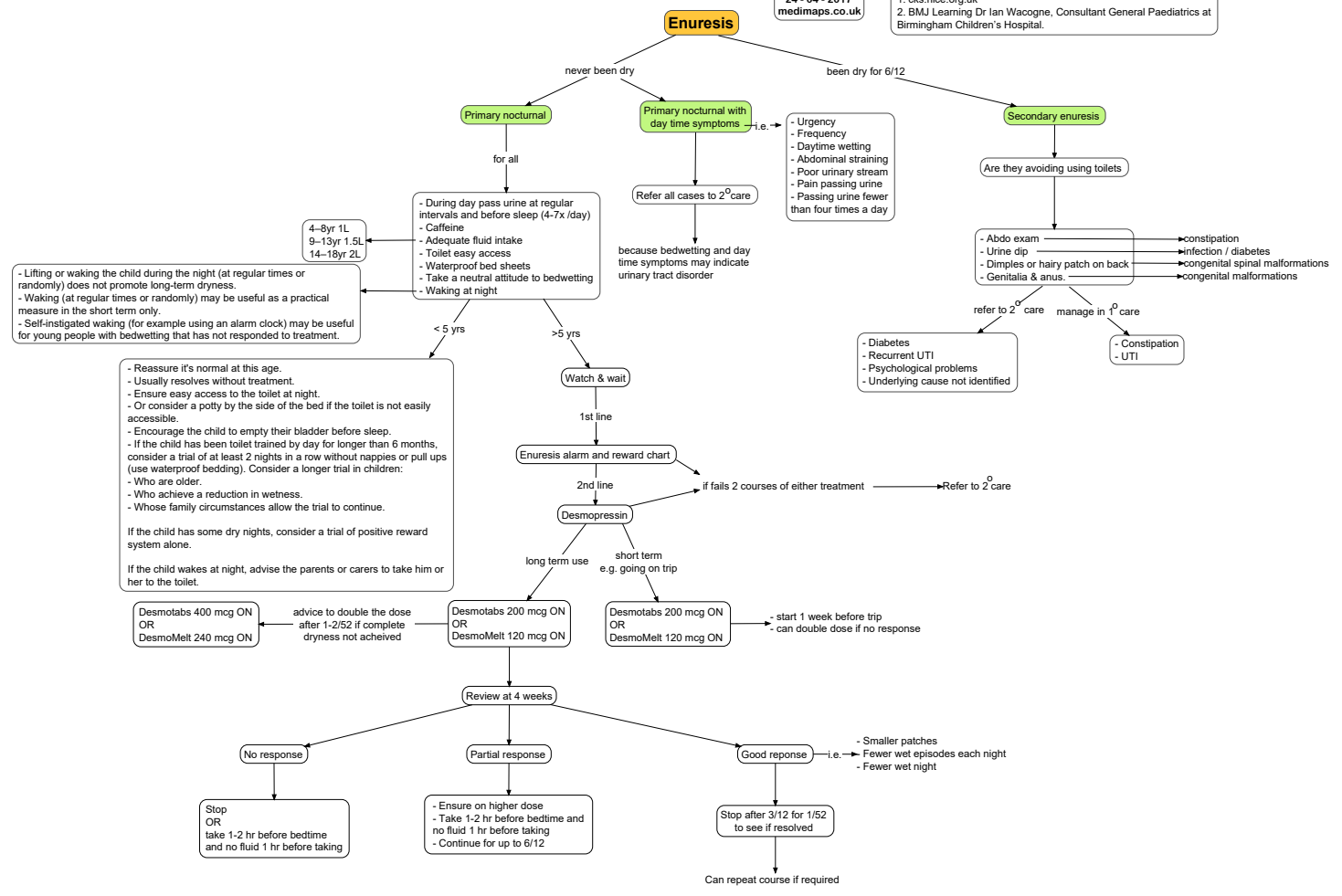


Disclaimer:
Read the disclaimer at medimaps.co.uk/disclaimer

References:
1. cks.nice.org.uk
2. BMJ Learning Dr Ian Wacogne, Consultant General Paediatrics at Birmingham Children's Hospital.



Desmopressin

How to take:

- Take at bedtime.
- Works by reducing the amount of urine the body produces at night.
- Fluid restrict to sips only, from 1 hr before taking desmopressin until 8 hours afterwards (a total of one regular glass of water may be drunk in this time).
- Fluid restriction is required to avoid the potential for fluid overload and hyponatraemia, which can lead to hyponatraemic convulsions.
- Avoid swallowing water when swimming.
- Avoid NSAIDs due to fluid retention.
- Stop if any illness causing diarrhoea or vomiting.

Discuss with specialist if:

- Sickle cell disease.
- Cystic fibrosis.
- Behavioural, attentional, and emotional disorders (the child may not be able to comply with fluid restrictions).